

## V4944N1086, V4944N1094, V4944N1102 Regulating Diaphragm Gas Valves

PRODUCT DATA



### FEATURES

- Suitable for use with natural gas or LP.
- Valve model is rapid opening (less than six seconds) and fast closing.
- V4944N is used with line voltage dual-stage thermostat or controller.
- Valve closes on power failure; recommended for final shutoff service.
- Valves rated for 0.5 pound per square inch (psi) (3.4 kPa).
- Leadwires and cover for electrical conduit connections are provided.

### APPLICATION

The V4944N Regulating Diaphragm Gas Valve (two stage) is a solenoid-operated diaphragm valve suitable for natural or LP gas. The valve is used on boilers, unit heaters, duct furnaces, makeup air and rooftop heaters.

### Contents

Application .....	1
Features .....	1
Ordering Information .....	2
Installation .....	4
Operation .....	7
Checkout and Troubleshooting .....	8
Service Information .....	9



# SPECIFICATIONS

**Models:**

V4944N (120 Vac) solenoid operated diaphragm valves for 0.5 psi (3.4 kPa) rapid-opening, two stage pressure regulation for use with natural or LP gas.

\*Valve without regulation spring kits, see Accessories and Table 3.

**Type of Gas:** Suitable for natural and liquefied petroleum (LP) gases.

**Flow Capacity:** See Table 1.

**Table 1. V494N Flow Capacity.**

Pipe Size (in.)	AGA Certified 1.0 in. pd Natural Gas cfh	Btuh per 1000 cfh Natural gas	Regulation Capacities 0.64 sp gr Natural Gas	
			Maximum cfh	Minimum cfh
1	1,000	1,000,000	1,000	300
1-1/4	1,600	1,600,000	1,600	480
1-1/2	2,300	2,300,000	2,300	780

**Table 2. Model Availability.**

Model	Voltage and Frequency	Pipe Size (in.)	Thread Type	Maximum Operating Pressure		Opening Time (sec.)	Pressure Regulation	Type of Gas	Number of Leadwires
				psi	kPa				
V4944N1086	120 Vac, 60 Hz, +10%, -15%.	1	NPT	0.5	3.4	<6	Two stage	Natural or LP	3
V4944N1094		1-1/4							
V4944N1102		1-1/2							

**Valve Closing Time:** On power failure, a maximum of 2 seconds at 7 in. wc inlet pressure.

**Power Consumption:**

V4944N: 9 VA maximum.

**Ambient Temperature Ratings:**

V4944N: -40°F to +150°F (-40°C to +66°C).

**Maximum Fluid Temperatures:**

V4944N: 150°F (66°C).

**Pressure Regulator Vents:** 5/16-24 UNF internal tapping.

**Valve Pattern:** Straight-through, non offset.

**Valve Body Material:** Die-cast aluminum.

**Electrical Ratings:**

V4944N Current: 0.077A maximum at rated voltage and frequency.

**Electrical Terminations:** 1/4 in. (6 mm) spade terminals (quick connects). Leadwires and cover for electrical conduit connections are provided.

**Valve Opening Time:** See Table 2.

**Regulation Ranges:** See Table 3.

**Table 3. Regulation Ranges.**

Spring Kit Part Number	Natural Gas Adjustable Range	Cap Color
32006807-001	1.4 to 4.2 in. wc	Black
32006807-002	4.0 to 7.0 in. wc	Silver
32006807-003	8.8 to 11.5 in. wc	Red

**Dimensions:** See Fig. 1.

# ORDERING INFORMATION

When purchasing replacement and modernization products from your TRADELINE® wholesaler or distributor, refer to the TRADELINE® Catalog or price sheets for complete ordering number.

If you have additional questions, need further information, or would like to comment on our products or services, please write or phone:

1. Your local Home and Building Control Sales Office (check white pages of your phone directory).
2. Home and Building Control Customer Relations  
Honeywell, 1885 Douglas Drive North  
Minneapolis, Minnesota 55422-4386

In Canada—Honeywell Limited/Honeywell Limitée, 35 Dynamic Drive, Scarborough, Ontario M1V 4Z9.

International Sales and Service Offices in all principal cities of the world. Manufacturing in Australia, Canada, Finland, France, Germany, Japan, Mexico, Netherlands, Spain, Taiwan, United Kingdom, U.S.A.

**Weight:**

1 in., 1-1/4 in. valves: 4 lb (1.8 kg).  
 1-1/2 in. valve: 5 lb (2.3 kg).

**Mounting Position:** Standard Position: Upright (horizontal).

**Approvals:**

Underwriters Laboratories Component Recognized: File Number MH1639, Guide Number YIOZ.

**Accessories:**

32006807-001 1.4 to 4.2 in. wc Spring Kit, color coded black.  
 32006807-002 4.0 to 7.0 in. wc Spring Kit, color coded silver.  
 32006807-003 8.8 to 11.5 in. wc Spring Kit, color coded red.  
 204480 Regulator Vent Pipe Connector.

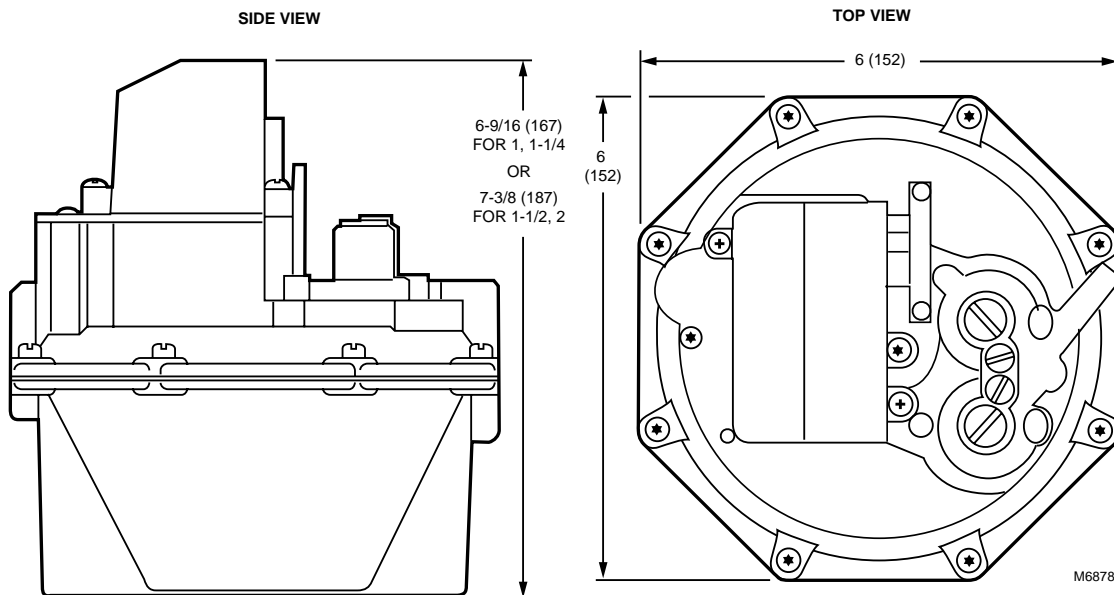


Fig. 1. V4944 dimensions in in. (mm).

**Gas Valve Sizing**

1. Check the burner nameplate for:
  - a. the type of gas used, and
  - b. the gas flow capacity. The capacity will be listed in British thermal units per hour (Btuh) or in cubic feet per hour (cfh).
2. Contact the local gas utility for information regarding:
  - a. the specific gravity (sp gr) and
  - b. the Btu per cubic foot (Btucf) for the type of gas used.
3. Find the capacity in cf/h. If the capacity is listed in Btu, convert to cf/h using the following formula:  

$$\frac{\text{Capacity in Btu/h (burner nameplate)}}{\text{Btu/cu ft (gas utility)}}$$
4. For gases with specific gravities other than 0.64, multiply the burner cf/h using the proper conversion factor in Table 4.

Table 4. Gas Conversion Factors.

Type of Gas	sp gr (average)	Multiply cfh by
Manufactured	0.60	0.97
Mixed	0.70	1.05
LP-Propane	1.53	1.55
LP-Butane	1.98	1.76

5. Use the corrected capacity in cfh when determining the gas valve size in Fig. 2, 3, or 4.
6. Determine the maximum pressure drop across the valve and draw a vertical line at this pressure in Fig. 2, 3, or 4.
7. At the point of intersection of the vertical line and the curve, draw a horizontal line to intersect the flow (capacity) scale. The point of intersection indicates the capacity that can be obtained with the maximum pressure drop.
8. If the capacity at the maximum pressure drop is insufficient, use the capacity vs. pressure drop curve for the next larger valve size and repeat steps 6 and 7.

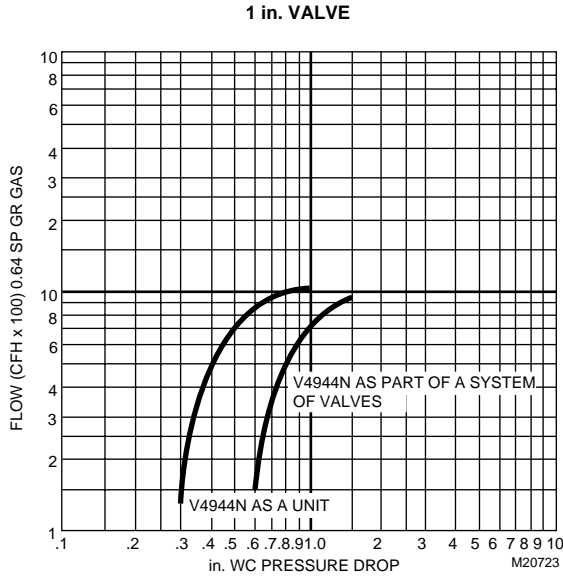


Fig. 2. Capacity vs. pressure drop curves for 1 in. valve.

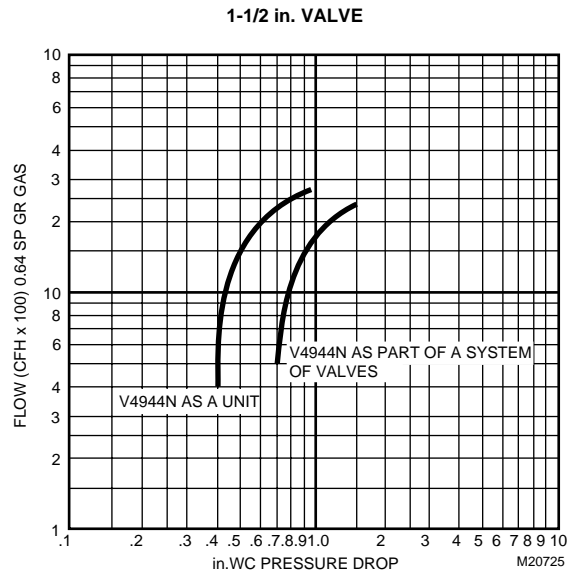


Fig. 4. Capacity vs. pressure drop curves for 1-1/2 in. valve.

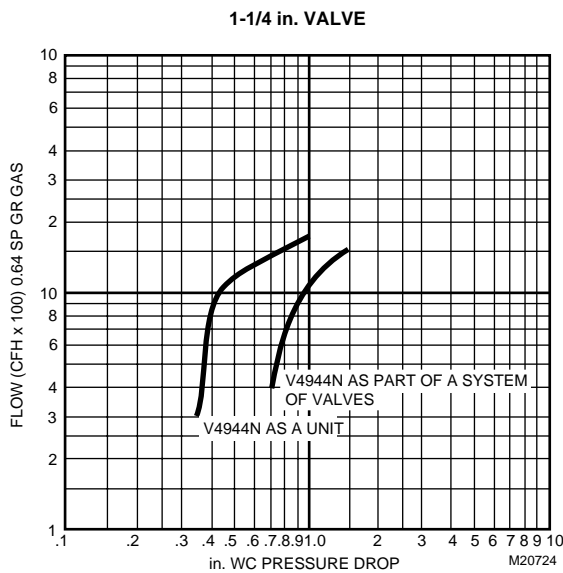


Fig. 3. Capacity vs. pressure drop curves for 1-1/4 in. valve.

### To size two identical valves piped in series:

1. Find the cf/h for the type of gas used.
2. Consider both valves as one unit. Determine the maximum pressure drop across the one unit.
3. Find the pressure drop across the first valve by assuming it to be 45 percent of the total pressure drop.
4. Find the valve size from Fig. 2, 3, or 4.
5. The second valve will be the same size as the first valve.

## INSTALLATION

### WARNING

**Explosion hazard.**

**Can cause serious injury, death or equipment damage.**

Installation and service by trained professionals only. Exceeding the pressure rating or use of unspecified fuel can lead to improper operation of the valve and can create an explosion hazard. Property damage, severe bodily injury or death can result.

Consult specifications before installing valve.

### When Installing this Product...

1. Read these instructions carefully. Failure to follow them could damage the product or cause a hazardous condition.
2. Check the ratings given in the instructions and on the product to make sure the product is suitable for your application.
3. Installer must be a trained experienced flame safeguard control technician.
4. After installation is completed, check out product operation as provided in these instructions.

## **⚠ WARNING**

**Explosion hazard and electrical shock hazard. Can cause serious injury or death.**

1. Turn off gas supply before starting installation.
2. Disconnect power supply before beginning installation to prevent electrical shock and equipment damage.
3. Do not remove seal over valve inlet or outlet until ready to connect piping.

### **Prepare Piping and Install Valve (Fig. 6).**

1. Use new, properly reamed pipe free from chips.
2. Do not thread pipe too far. Valve distortion or malfunction can result from excess pipe in valve.
3. Apply good quality pipe dope resistant to the action of LP gas; put a moderate amount only on the pipe threads. If pipe dope lodges on the valve seat, it will prevent proper closure.
4. Install the valve in a horizontal pipe line in an upright position with the gas flow in the direction indicated by the arrow on the casing. The valve must be upright (electrical connection tower in the up position) on a horizontal axis with respect to the inlet connection (see Fig. 6). Certain models may be mounted in the

limited horizontal position (any position from upright to 90 degrees to upright on an horizontal axis with respect to the inlet connection. See Specifications section.)

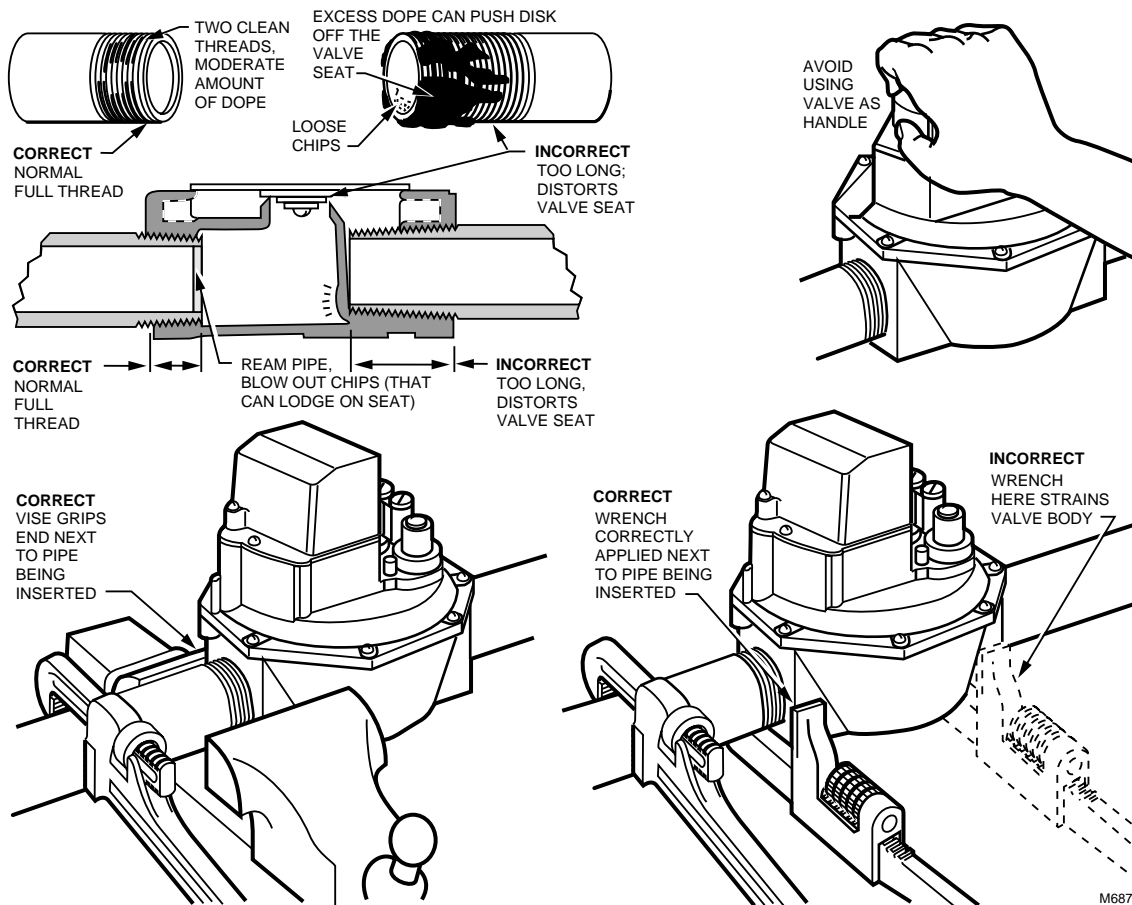
5. Apply a parallel jaw wrench only to the flat next to the pipe being inserted. A wrench applied to the valve body itself or to the end farthest from the pipe being inserted can distort the casting and cause a malfunction.
6. The gas flow must be in the same direction as the arrow on the bottom of the valve body.

## **⚠ WARNING**

**Explosion and Fire Hazard. Can cause serious injury or death.**

If flow is not in direction of arrow, valve may not shut off; which can cause excess gas and harm to equipment or personnel.

7. Make electrical connections as illustrated in the wiring diagrams (Fig. 8 through 11).
8. Turn on the main gas and, with a soap solution, check the valve installation for leaks.
9. The V4944N combination valve pressure regulating sections are provided with integral vent limiters and threaded connections for vent piping (integral 5/16—24 UNF). If piping to the outdoors is required, use 204480 vent fitting.



**Fig. 5. Preparing the piping and installing the valve.**

## Valve Leak Test (See Fig. 7).

This test checks the tightness closure of a gas safety shutoff valve. It should be performed by a qualified technician during the initial startup of a burner system, or whenever the valve is replaced (see Service Information section). It is recommended that this test also be included in scheduled inspection and maintenance procedures. For a periodic inspection test, follow steps 1, 3, 4, 5, 8, 9, 10, 12, 13, 16 and 17.

1. De-energize the control system to make sure there is no power to the safety shutoff valve (C) shown in Fig. 7.
2. Close the upstream manual gas cock (A).
3. Make sure the manual test petcock (F) is closed in the leak test tap assembly (D).
4. Remove the leak test tap plug (valve outlet pressure tap can be used as a test tap) and connect the test apparatus to the leak test tap (D).
5. Close the downstream manual gas cock (E).
6. Open the upstream manual gas cock (A).
7. Run the safety shutoff valve (C) to its fully open position (through the safety system); then immediately de-energize the system to close the valve.
8. Immerse a 1/4 in. tube vertically 1/2 in. (13 mm) into a jar of water.
9. Slowly open the test petcock (F).
10. When the rate of bubbles coming through the water stabilizes, count the number of bubbles appearing during a ten-second period. Each bubble appearing during a ten-second period represents a flow rate of approximately 0.001 cfh.

NOTE: To meet U.S. requirements, leakage must not exceed the values in Table 5.

Table 5. Allowable Leakage Rates.

Pipe Size (in.)	Allowable <sup>a</sup> Leakage	Number of Bubbles per 10 sec.
1, 1-1/4	353	13
1-1/2, 2	453	16

<sup>a</sup> Based on air standard conditions, test pressures in accordance with ANSI Z21.21, Section 2.4.2 and a maximum of 235 cc/h per inch of seal-off-diameter. Seal-off diameter is not the same as pipe size.

11. Close the upstream manual gas cock (A).
12. Close the test petcock (F), remove the test apparatus, and replace the leak test tap plug (D).
13. Open the upstream manual gas cock (A) and energize the safety shutoff valve (C).

14. Test with soap bubbles to make sure there is no leak at the test tap (D).
15. De-energize the safety shutoff valve (C).
16. Open the downstream manual gas cock (E).
17. Restore the system to normal operation.

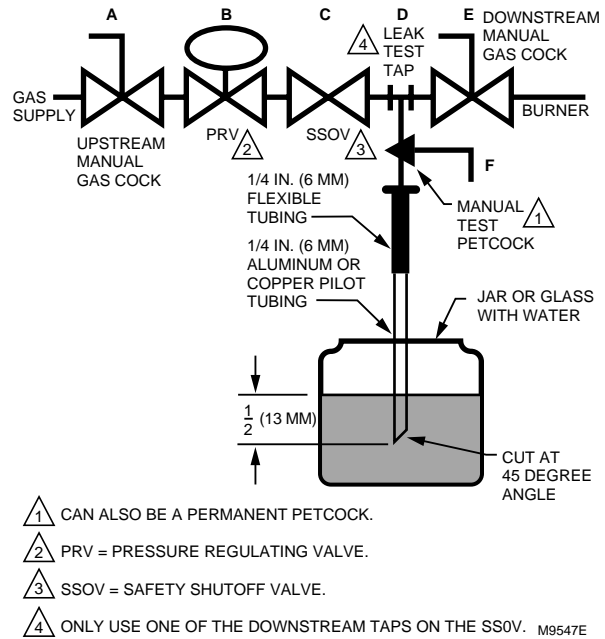


Fig. 6. Valve leak test.

## Installing and Adjusting Spring Kits (Fig. 7)

Install the applicable spring kit as follows:

1. Remove the tape covering the Lo and Hi openings on the top of the valve.
2. Select the correct Lo and Hi spring sets for the particular application.
3. Insert the spring and adjusting screw in each opening.
4. Adjust the gas output pressure with the adjustment screw (see Fig. 7).

NOTE: Turning the screw clockwise increases the pressure; turning the screw counterclockwise decreases the pressure.

5. When the pressure setting is correct for each spring (Lo and Hi), insert the the cap over the screw and tighten the cap.

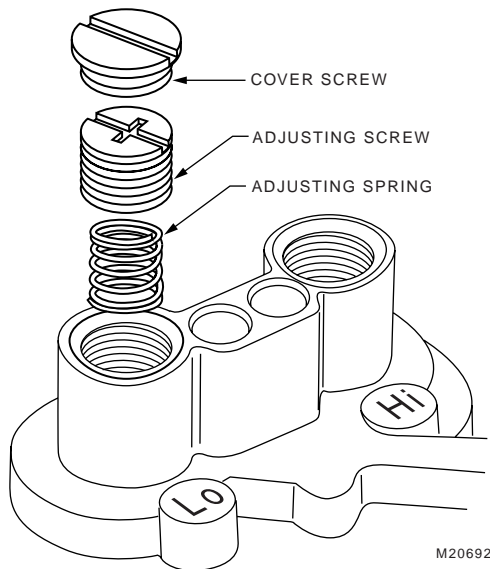


Fig. 7. Installing the spring kit into the V4944N.

## WARNING

**Explosion or Fire Hazard.**  
**Can cause severe injury, death or property damage.**  
 Do not operate the V4944N without a spring kit installed.

## Wiring

## WARNING

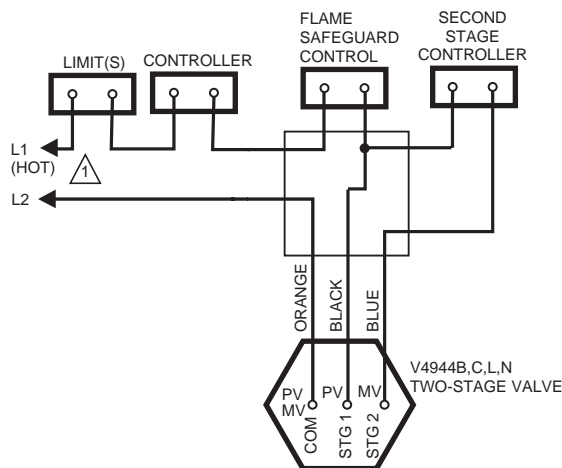
**Electrical Shock Hazard.**  
**Can cause serious injury, death or equipment damage.**  
 Disconnect the power supply before making connections to prevent electrical shock and equipment damage.

1. All wiring must comply with applicable electrical codes, ordinances and regulations. Use NEC Class 1 (line voltage) wiring.
2. For normal installations, use moisture-resistant No. 14 wire suitable for at least 167°F (75°C) when using a flame safeguard primary control, or for at least 194°F (90°C) when using a flame safeguard programming control.
3. For high temperature installations, use moisture-resistant No. 14 wire selected for a temperature rating above the maximum operating temperature.
4. Check the power supply circuit. The voltage and frequency must match those of the valve.
5. See Fig. 8 through 11 for typical field wiring connections. Follow the burner manufacturer wiring diagram, if provided.
6. Make wiring connections at the electrical wires provided at the top of the valve.

## CAUTION

**Equipment Damage Hazard.**  
**Miswiring can cause equipment damage.**

1. Label all wires prior to disconnection when servicing valves. Wiring errors can cause damage to the equipment through improper and dangerous operation.
2. Verify proper operation after servicing.
3. After the installation is complete, cycle the valve several times with the manual fuel shutoff cock closed. Make sure the valve and actuator function properly.
4. If the installation is gas tight and functioning properly, proceed to the Checkout section.



1 POWER SUPPLY. PROVIDE DISCONNECT MEANS AND OVERLOAD PROTECTION AS REQUIRED.

M6886B

Fig. 8. Typical wiring diagram for V4944N with three leadwire electrical termination.

## OPERATION

### General

The V4944N Valves are solenoid-operated diaphragm gas valves with two stages of regulation. They can operate as a shut-off valve and a pressure regulating valve. The V4944N have two stages of regulation (high fire and low fire) and are rapid opening devices.

The range of outlet pressure is adjusted by turning a screw which changes the compression in the regulator spring. The valves are suitable for natural gas or LP applications.

Leadwires and a cover for electrical conduit connections are provided with each valve.

The valves are available in 1 in., 1-1/4 in. and 1-1/2 in. sizes. The 1 in. and 1-1/4 in. valves share a common body casting and the 1-1/2 in. valve uses a larger body casting.

The valves are used as combination controls, providing both pressure regulation and shutoff functions for burners. Typical burner applications include boilers, process equipment,

ovens, incinerators, water heaters, rooftop units, and commercial/industrial atmospheric/power burners. The burner firing rates range from 400 kbtu/hour to 5,000 kbtu/hour.

## Operation of the V4944N Valves

These models use two pressure regulators (low fire and high fire) and two solenoids to provide two distinct stages of pressure regulation. The first stage pressure regulator solenoid activates the quick-close orifice valve and servo valve, but the bleed gas flows through a first stage (low fire) regulator valve to the outlet. This maintains the outlet at a pressure controlled by the low fire regulator. The second stage regulator (high fire) is set to a higher outlet pressure. When the second stage solenoid is energized, gas is shunted past the low fire regulator through a timing orifice. The increased flow of supply gas (due to the second servo valve opening) further reduces the pressure above the main diaphragm, causing it to open more. The corresponding increase in outlet pressure forces the low fire regulator closed, and the valve regulates off the high fire regulator.

The V4944N models use a timing orifice that gives an opening time to low fire of less than six seconds.

Both regulators can be adjusted separately and the springs are sized so that the highest achievable pressure of the low pressure regulator range is less than the lowest achievable pressure of the high fire pressure regulator. The high fire setpoint cannot be achieved without the first stage solenoid being energized.

After the controller is satisfied, the procedure is reversed. The controller contacts open and the solenoid coil is de-energized. The plunger is released, moving to the down position. The servo valve closes, diverting supply gas away from the orifice and allowing the gas inlet pressure to act directly above the main diaphragm. The resulting increase in upper chamber pressure, along with the main spring, forces the main diaphragm against the valve seat, stopping the gas flow.

In the event of a power failure during automatic operation of the valve, the valve servo valve closes, diverting supply gas away from the orifice and allowing the gas inlet pressure to act directly on the main diaphragm. The change in upper chamber pressure, along with the main spring, forces the main diaphragm against the valve seat, stopping the gas flow. Normal operation will resume upon the restoration of power.

## CHECKOUT AND TROUBLESHOOTING

### WARNING

**Explosion or Fire Hazard.**

**Can cause serious injury or death.**

Do not let fuel accumulate in the combustion chamber. If fuel is allowed to enter the chamber for longer than a few seconds without igniting, an explosive mixture could result.



### CAUTION

**Equipment Damage Hazard.**

**Failure to complete tests can cause equipment damage.**

1. Do not put the system into service until you have satisfactorily completed all applicable tests described in the Checkout section of the instructions for the flame safeguard control, and any other tests required by the burner manufacturer.
2. Close all manual fuel shutoff valves as soon as trouble occurs.

## Checkout

1. Valve outlet pressure measurements are made at a point approximately five pipe diameters downstream from the valve outlet. Consider pressure measurements made at the outlet pressure tap as reference measurements only, because turbulence and dynamic gas flow effects may result in erratic pressure readings.
2. Shut off gas supply to valve and make sure valve is closed when setting up pressure measuring equipment.
3. Verify that the low and high fire regulating spring kits have been installed. Remove the cover cap and make sure the adjusting screw is in place (see Fig. 7).
4. Set up pressure measuring equipment.
5. Make sure the valve is closed. Turn on the supply gas to the valve.
6. Set the thermostat or controller to energize the valve and check the final outlet pressure. See step 1. Allow enough time for the system pressure to stabilize.
7. The low pressure regulator and high pressure regulator adjustment screws were installed and adjusted at the time of valve installation and are located under the slotted aluminum screw cap(s) of the adjustment screw housings (see Fig. 1). To adjust the pressure setting:
  - a. Temporarily remove the slotted aluminum screw cap and gasket from the housing that contains the regulator adjustment setscrew.
  - b. Turn the adjustment setscrew clockwise to increase the pressure setting or counterclockwise to decrease the pressure setting. Allow adequate time (30 to 60 seconds) for the pressure to reach equilibrium between pressure adjustments. After the regulators have been properly adjusted, replace the gasket and slotted aluminum screw cap on the adjustment screw housing.
8. Start the system and observe its operation through at least one complete cycle to make sure the valve functions properly.

## Troubleshooting



### WARNING

**Electrical Shock Hazard.**

**Can cause electrical shock or equipment damage.**

Use utmost care during troubleshooting. Line voltage is present right at the electrical terminations for the V4944N valves, and present in all controller circuits.

### IMPORTANT

*Do not assume that the valve must be replaced until all other sources of trouble have been eliminated.*



1. If the valve will not open when the thermostat or controller calls for heat:
  - a. Check that there is voltage at the proper electrical terminations. Be careful—there should be line voltage at the actuator.
  - b. If there is no voltage at the actuator, first make sure line voltage power is connected to the master switch, the master switch is closed and overload protection (circuit breaker, fuse or similar device) has not opened the power line.
  - c. If there is still no voltage at the actuator, make sure all appropriate contacts in the thermostat or controller, limits and flame safeguard control are closed. If one or more is open, determine the cause(s) and correct the condition(s) before proceeding.
  - d. If there is proper voltage at the valve actuator but the valve still does not open, first check that the gas pressure at the valve is normal.
  - e. If the valve still does not open, replace the valve.
2. If the valve will not close when one or more of the appropriate contacts in the thermostat or controller, limit(s) or flame safeguard control is open:
  - a. Make sure that the gas flow is in the direction of the arrow on the valve body.
  - b. Make sure the valve actuator is wired in the correct circuit. Open the master switch to remove power from the valve actuator. If the valve closes now, the actuator may not be wired properly. Check and correct the wiring, if necessary.
  - c. Look for a short in the electrical circuit.

## SERVICE INFORMATION

### WARNING

#### **Electrical Shock Hazard**

**Can cause serious injury, death or equipment damage.**

1. Only qualified service technicians should attempt to service or repair flame safeguard controls and burner systems.
2. Line voltage is present in the electrical circuits to the valve. Open the master switch before replacing the valve.

### **Scheduled Inspection and Maintenance**

For periodic inspection and maintenance, set up a schedule and follow it. Include the burner valves and all other controls. Refer to the flame safeguard control instructions for more information.

### CAUTION

#### **Equipment Damage Hazard.**

**Can cause equipment damage or improper operation.**

Label all wires prior to disconnecting when servicing valves. Wiring errors can cause improper and dangerous operation.

Verify proper operation after servicing.





# Honeywell

---

## **Automation and Control Solutions**

Honeywell  
1985 Douglas Drive North  
Golden Valley, MN 55422

Honeywell Limited-Honeywell Limitée  
35 Dynamic Drive  
Scarborough, Ontario  
M1V 4Z9

## **Honeywell International**

Control Products  
Honeywell Building  
17 Changi Business Park Central 1  
Singapore 486073

## **Honeywell Europe S.A.**

3 Avenue du Bourget  
1140 Brussels  
Belgium

## **Honeywell Latin American Region**

480 Sawgrass Corporate Parkway  
Suite 200  
Sunrise FL 33325

