



50 HERTZ METRIC BLOWER

Pressure Range	Model Number	Motor Rating		Volume			
		kW	HP	m ³ /min	m ³ /hr	cfm	cfh
500mm 20" wc 12 osi	TBA 500-1.5	1.5	2	10.5	630	370	22,248
	TBA 500-2.2	2.2	3	19.5	1,170	688	41,312
	TBA 500-3	3.0	5	27.2	1,630	960	57,555
	TBA 500-4	4.0	7.5	36.3	2,180	1,292	76,975
	TBA 500-5.5	5.5	7.5	50.3	3,020	1,776	106,636
	TBA 500-7.5	7.5	10	68.0	4,080	2,401	144,064
	TBA 500-11	11	15	94.3	5,660	3,329	199,854
	TBA 500-15	15	20	131.7	7,900	4,650	278,949
	TBA 500-18.5	18.5	25	171.7	10,300	6,062	363,693
700mm 27" wc 16 osi	TBA 700-3	3	5	13.8	830	487	29,307
	TBA 700-4	4	7.5	21.2	1,270	748	44,843
	TBA 700-5.5	5.5	7.5	33.0	1,980	1,165	69,913
	TBA 700-7.5	7.5	10	52.3	3,140	1,846	110,873
	TBA 700-11	11	15	73.3	4,400	2,588	155,364
	TBA 700-15	15	20	96.6	5,800	3,410	204,798
	TBA 700-18.5	18.5	25	113.8	6,830	4,018	241,167
	TBA 700-22	22	30	139.3	8,360	4,918	295,191
	TBA 700-30	30	40	181.7	10,900	6,415	384,879
900mm 35" wc 20 osi	TBA 900-3	3	5	9.3	555	328	19,597
	TBA 900-4	4	7.5	14.3	860	504	30,366
	TBA 900-5.5	5.5	7.5	18.5	1,110	653	39,194
	TBA 900-7.5	7.5	10	33.3	2,000	1,175	70,620
	TBA 900-11	11	15	49.3	2,960	1,740	104,517
	TBA 900-15	15	20	71.7	4,300	2,531	151,833
	TBA 900-18.5	18.5	25	84.7	5,080	2,990	179,374
	TBA 900-22	22	30	108.3	6,500	3,824	229,515
	TBA 900-30	30	40	138.3	8,300	4,883	293,073
1100mm 43" wc 24 osi	TBA 1100-4	4	7.5	10.2	615	360	21,715
	TBA 1100-5.5	5.5	7.5	16.7	1,000	589	35,310
	TBA 1100-7.5	7.5	10	22.0	1,320	776	46,609
	TBA 1100-11	11	15	41.7	2,500	1,472	88,275
	TBA 1100-15	15	20	56.7	3,400	2,002	120,054
	TBA 1100-18.5	18.5	25	75.0	4,500	2,648	158,895
	TBA 1100-22	22	30	87.5	5,250	3,089	185,377
	TBA 1100-30	30	40	121.7	7,300	4,297	257,763
	TBA 1100-37	37	50	145.8	8,750	5,148	308,962
	TBA 1100-45	45	60	175	10,500	6,179	370,755

Note: 1. Above capacities at 760 mm Hg. Inlet pressure and 20°C inlet temperature.
 2. All motors on above machines are 50 Hertz, 3000 RPM standard shaft motors
 (Re-rated standard 60 Hertz motor and NEMA Frame)

In accordance with Hauck's commitment to Total Quality Improvement, Hauck reserves the right to change the specifications of products without prior notice.

This page left intentionally blank.

Dimensions – 50 Hertz 500 mm Pressure Range

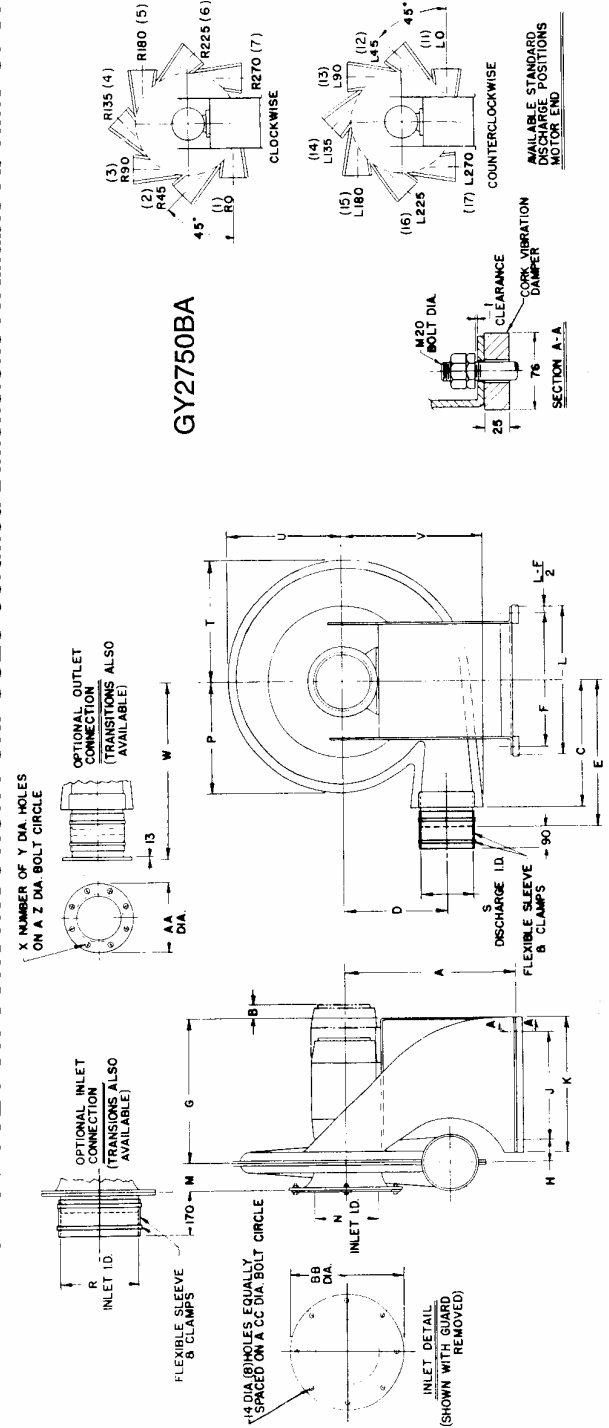
MODEL	MOTOR RATING		PRESSURE mm wc	VOLUME m ³ /Hr	MOTOR FRAME SIZE											
	kW	HP			Metric						US 50 Hz					
			Req. 50Hz	TEFC	TEFC	ODP	TEFC	TEFC								
TBA500-1.5	1.5	2	630	630	560	0	145T	559	0	182T	584	0	584	0		
TBA500-2.2	2.2	3	1,170	1,170	560	0	182T	584	0	184T	584	0	584	0		
TBA500-3	3	5	1,630	1,630	570	0	184T	584	0	213T	603	0	603	55		
TBA500-4	4	7.5	2,180	2,180	582	0	213T	603	0	215T	603	0	603	95		
TBA500-5.5	5.5	7.5	3,020	3,020	602	45	213T	603	0	215T	603	0	603	80		
TBA500-7.5	7.5	10	4,080	4,080	602	45	215T	603	30	254T	667	33	667	33		
TBA500-11	11	15	5,660	5,660	668	25	254T	667	0	256T	667	0	667	55		
TBA500-15	15	20	7,900	7,900	668	15	256T	667	0	284TS	686	0	686	40		
*TBA500-18.5	18.5	25	10,300	10,300	668	60	284TS	686	0	286TS	686	0	686	80		

All dimensions in millimeters *TBA500-18.5 Available in C.W. rotation only. Horsepower is rerated

Model	C	D	E	F	G	H	J	K	L	M	N	P	R	S	T	U	V	W	X	Y	Z	AA	BB	CC
TBA500-1.5	327	330	403	432	413	82	279	381	495	76	203	356	210	108	381	368	410	530	8	14	151	178	305	273
TBA500-2.2	432	340	508	432	413	82	279	381	495	76	203	375	210	159	403	390	454	635	8	14	200	229	305	273
TBA500-3	457	387	533	432	413	82	279	381	495	95	254	422	260	210	467	448	527	660	8	14	254	279	375	338
TBA500-4	457	387	533	432	413	82	279	381	495	95	254	422	260	210	467	448	527	660	8	14	254	279	375	338
TBA500-5.5	514	416	590	432	422	92	279	381	495	124	305	444	311	260	508	483	584	718	12	17	311	356	457	413
TBA500-7.5	514	416	590	533	581	95	432	540	597	124	305	444	311	260	508	483	584	718	12	17	311	356	457	413
TBA500-11	521	438	597	533	587	102	432	540	597	146	356	467	362	311	549	511	635	724	12	17	362	406	495	457
TBA500-15	521	438	597	533	610	124	432	540	597	168	356	467	362	362	549	511	635	724	12	28	413	457	495	457

Note: TBA500-7.5 Using a Metric TEFC or US 50 Hz ODP motor (D132SB or 215T Frame) will have G=422, H=92, J=279, K=381, L=495.
 A TBA500-7.5 with a US 50 Hz TEFC (254T Frame) will have G=561, H=95, J=432, K=540, L=597.

DO NOT USE FOR CONSTRUCTION PURPOSES Certified Dimensions Available At Time Of Order



GY2750BA

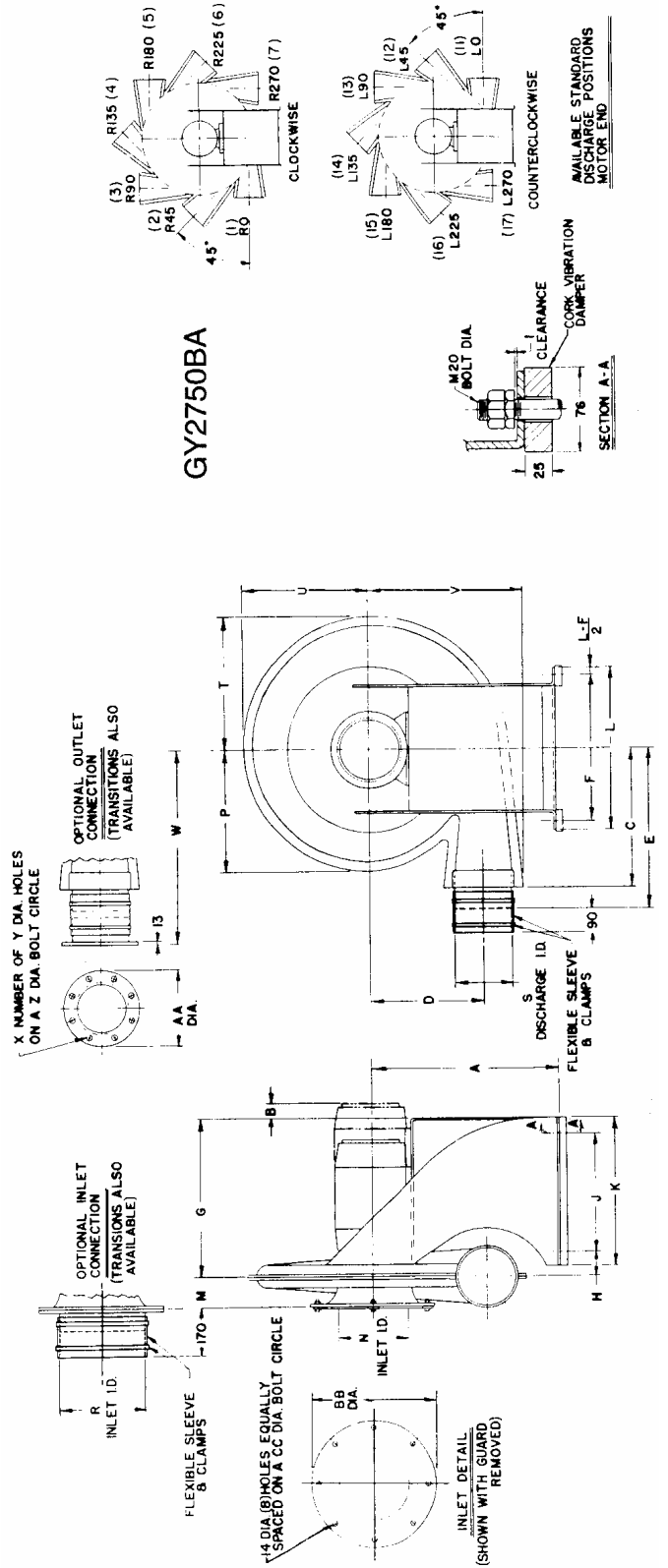
Dimensions - 50 Hertz 700 mm Pressure Range

MODEL	MOTOR RATING		PRESSURE mm WC	VOLUME m ³ /Hr	MOTOR FRAME SIZE											
	kW	HP			Metric						US 50 Hz					
			TEFC		ODP		TEFC		ODP		TEFC		ODP			
	Req. 50Hz	HP	Frame	A	B	Frame	A	B	Frame	A	B	Frame	A	B		
TBA700-3	3	5	830	D100L	570	0	184T	0	584	0	213T	603	0			
TBA700-4	4	7.5	1,270	D112M	582	0	213T	0	603	0	215T	603	0			
TBA700-5.5	5.5	7.5	1,980	D132S	640	0	213T	0	641	0	215T	641	0			
TBA700-7.5	7.5	10	3,140	D132S	640	0	215T	0	641	0	254T	667	20			
TBA700-11	11	15	4,400	D160M	668	40	254T	0	667	0	256T	667	70			
TBA700-15	15	20	5,800	D160M	668	25	256T	0	667	0	284TS	686	50			
TBA700-18.5	18.5	25	6,830	D160L	668	70	284TS	0	686	0	286TS	686	90			
TBA700-22	22	30	8,360	D180M	726	15	286TS	0	724	0	324TS	749	40			
TBA700-30	30	40	10,900	D200L	746	105	324TS	0	749	0	326TS	749	80			

All dimensions in millimeters. Horsepower is rated.

Model	C	D	E	F	G	H	J	K	L	M	N	P	R	S	T	U	V	W	X	Y	Z	AA	BB	CC
TBA700-3	457	397	533	432	413	82	279	381	495	76	254	435	260	159	460	448	511	660	8	14	200	229	375	338
TBA700-4	457	397	533	432	413	82	279	381	495	76	254	435	260	159	460	448	511	660	8	14	200	229	375	338
TBA700-5.5	508	413	584	533	572	86	432	540	597	95	305	444	311	210	486	470	552	711	8	14	254	279	457	413
TBA700-7.5	578	464	654	533	575	89	432	540	597	111	305	495	311	260	549	527	629	781	12	17	311	356	457	413
TBA700-11	578	464	654	533	575	89	432	540	597	111	305	495	311	260	549	527	629	781	12	17	311	356	457	413
TBA700-15	514	483	590	533	581	95	432	540	597	127	305	518	311	260	581	552	654	718	12	17	311	356	457	413
TBA700-18.5	514	483	590	533	581	95	432	540	597	127	305	518	311	260	581	552	654	718	12	17	311	356	457	413
TBA700-22	514	505	590	572	657	111	483	610	635	156	356	536	362	311	610	572	698	718	12	17	362	406	495	457
TBA700-30	514	505	590	572	657	111	483	610	635	156	356	536	362	311	610	572	698	718	12	17	362	406	495	457

DO NOT USE FOR CONSTRUCTION PURPOSES Certified Dimensions Available At Time Of Order



GY2750BA

Dimensions – 50 Hertz 1100 mm Pressure Range

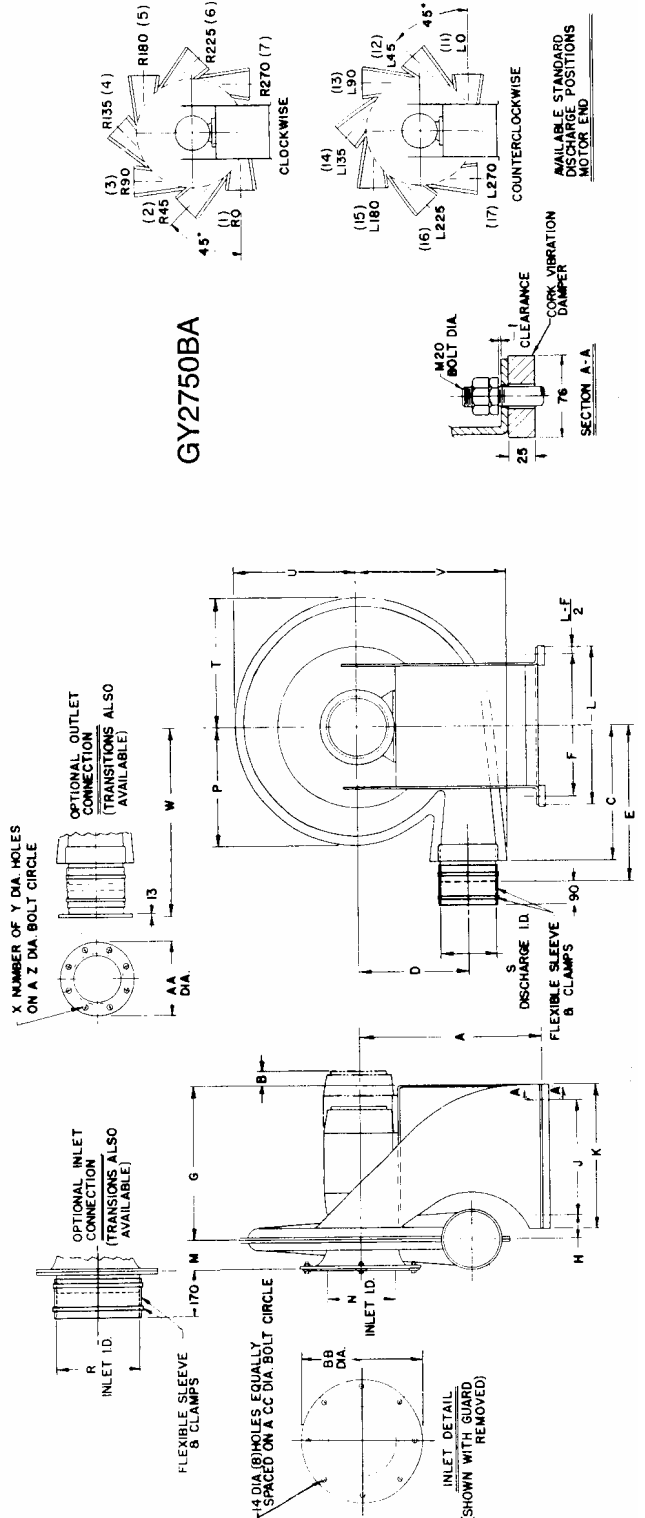
MODEL	MOTOR RATING		PRESSURE mm wc	VOLUME m ³ /Hr	MOTOR FRAME SIZE												
	KW	HP			Metric				US 50 Hz				TEFC				
			Req. 50Hz	Req. 50Hz	Frame	A	B	Frame	A	B	Frame	A	B	Frame	A	B	
TBA1100-4	4	7.5	615	D112M	712	0	213T	733	0	215T	733	0	215T	733	0	215T	733
TBA1100-5.5	5.5	7.5	1,000	D132SA	732	30	213T	733	0	215T	733	0	215T	733	0	215T	733
TBA1100-7.5	7.5	10	1,320	D132SB	732	30	215T	733	0	254T	827	0	254T	827	0	254T	827
TBA1100-11	11	15	2,500	D160M	828	25	254T	827	0	286TS	846	0	286TS	846	0	286TS	846
TBA1100-15	15	20	3,400	D160M	828	25	256T	827	0	286TS	846	0	286TS	846	0	286TS	846
TBA1100-18.5	18.5	25	4,500	D160L	828	40	284TS	846	0	324TS	870	0	324TS	870	0	324TS	870
TBA1100-22	22	30	5,250	D180M	848	65	286TS	845	0	326TS	924	0	326TS	924	0	326TS	924
TBA1100-30	30	40	7,300	D200L	920	0	324TS	924	0	364TS	949	0	364TS	949	0	364TS	949
TBA1100-37	37	50	8,750	D200L	920	0	326TS	924	0	364TS	949	0	364TS	949	0	364TS	949
TBA1100-45	45	60	10,500	+D225M	945	50	364TS	949	0	365TS	949	0	365TS	949	0	365TS	949

All dimensions in millimeters. Horsepower is related. +TBA1100-45 uses a D225M Frame with a 55 mm shaft.

Model	C	D	E	F	G	H	J	K	L	M	N	P	R	S	T	U	V	W	X	Y	Z	AA	BB	CC
TBA1100-4	483	483	560	683	683	450	300	400	750	107	203	525	210	108	542	536	583	686	8	14	151	178	305	273
TBA1100-5.5	483	483	560	683	683	450	300	400	750	107	203	525	210	108	542	536	583	686	8	14	151	178	305	273
TBA1100-7.5	483	483	560	683	683	Note	See 100	See Note	750	107	203	525	210	108	542	536	583	686	8	14	151	178	305	273
TBA1100-11	555	562	630	683	600	100	450	550	750	107	203	598	210	210	639	623	709	758	8	14	254	279	305	273
TBA1100-15	555	562	630	683	600	100	450	550	750	107	203	598	210	210	639	623	709	758	8	14	254	279	305	273
TBA1100-18.5	610	574	670	683	600	100	450	550	750	137	254	614	260	260	670	647	745	813	12	17	311	356	375	338
TBA1100-22	610	574	670	683	600	100	450	550	750	137	254	614	260	260	670	647	745	813	12	17	311	356	375	338
TBA1100-30	588	591	670	683	750	120	550	700	750	162	305	631	311	311	700	671	790	792	12	17	362	406	457	413
TBA1100-37	588	591	670	683	750	120	550	700	750	162	305	631	311	311	700	671	790	792	12	17	362	406	457	413
TBA1100-45	588	591	670	683	750	120	550	700	750	162	305	631	311	311	700	671	790	792	12	17	362	406	457	413

Note: TBA1100-7.5 Using a Metric TEFC or US 50 Hz ODP motor (D132SB or 215T Frame) will have G=450, J=300, K=400.
 A TBA1100-7.5 Using a US 50 Hz TEFC motor (254T Frame) will have G=600, J=450, K=550.

DO NOT USE FOR CONSTRUCTION PURPOSES Certified Dimensions Available At Time Of Order





TBA 50 Hz ACCESSORIES

INLET FILTER (FBI)

The Hauck Blower Inlet Filter is designed to provide efficient air filtration. The filter element consists of multiple layers of corrugated mesh (galvanized steel and epoxy coated aluminum) between two aluminum end plates. The element is mounted on a steel cylinder having eight studs for attaching to the blower inlet flange. Two stud patterns are available; one designed for Hauck Blowers and the other designed for a standard ANSI Class 125 flange. A light, rigid thermoplastic end cover holds the element in place, provides mid-and high-frequency sound attenuation, and allows for quick removal and replacement of the filter element. Six models are available with inlet diameters of 200, 250, 300, 350, and 450 mm.

INLET SILENCER (SBI)

The Hauck Blower Inlet Silencer is engineered to provide effective sound attenuation in the 63Hz to 8,000Hz frequency range. The silencer consists of a steel outer shell and a perforated inner shell and cone. The area between the shells is packed with sound absorbing material. The unit is designed with a studded flange for easy attachment to the blower inlet flange. Suitable stud patterns are available for Hauck Turbo Blowers or for a standard 1 ANSI Class 125 flange. Seven models are available with inlet diameters of 200, 250, 300, 350, and 450 mm.

INLET FILTER-SILENCER (FSB)

The Hauck Blower Inlet Filter-Silencer is a compact combination of the filter and silencer models described above. It combines, in a single unit, an efficient air filtration capability with effective sound attenuation in the 63 to 8,000Hz frequency range. The silencer section is equipped with eight studs for attaching to the blower inlet flange. Two stud patterns are available; one designed for use with Hauck Blowers, and the other designed for use with standard ANSI Class 125 flange. Seven filter-silencer models are available with inlet diameters of 200, 250, 300, 350, and 450 mm.

TRANSITIONS, INTAKE ADAPTERS

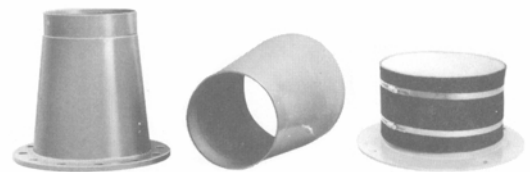
All sizes and types of transition pieces are available to facilitate connecting the blower outlet to the system piping. The transition inlet is designed to fit the blower sleeve while the outlet is available with flanged, welding, or straight connections. An Inlet adapter is available for applications where outside "fresh air" must be piped to the blower inlet. Adapter is complete with gasket and necessary fasteners.

VIBRATION ISOLATORS

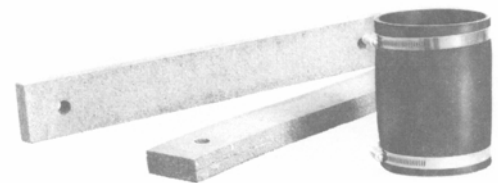
Vibration isolation is a necessary part of every blower installation where vibrations caused by other equipment can be transmitted to the blower. A flexible outlet sleeve and clamps are provided with every blower to eliminate these vibration transfers and compensate for ducting misalignment. Cork pads are also provided and should be used when mounting the blower on a floor or base through which vibrations can be transmitted. The use of vibration isolators helps ensure a longer blower life.



Inlet Filter Silencer (FSB). The filter or silencer can be ordered separately or as a package as shown.



Transitions, Intake Adapters.



Vibration Isolators

In accordance with Hauck's commitment to Total Quality Improvement, Hauck reserves the right to change the specifications of products without prior notice.

ACCESSORIES

RECOMMENDED FILTER / SILENCER

BLOWER MODEL NUMBER	FILTER MODEL NUMBER	SILENCER MODEL NUMBER	FILTER-SILENCER MODEL NUMBER
TBA500-1.5	FBI 1008	SBI 2008	FSB 3008
TBA500-2.2	FBI 1008	SBI 2008	FSB 3008
TBA500-3	FBI 1010	SBI 2010	FSB 3010
TBA500-4	FBI 1010	SBI 2010	FSB 3010
TBA500-5.5	FBI 1012	SBI 2012	FSB 3012
TBA500-7.5	FBI 1112	SBI 2112	FSB 3112
TBA500-11	FBI 1112	SBI 2112	FSB 3112
TBA500-15	FBI 1014	SBI 2014	FSB 3014
TBA500-18.5	FBI 1014	SBI 2014	FSB 3014
TBA700-3	FBI 1010	SBI 2010	FSB 3010
TBA700-4	FBI 1010	SBI 2010	FSB 3010
TBA700-5.5	FBI 1012	SBI 2012	FSB 3012
TBA700-7.5	FBI 1012	SBI 2012	FSB 3012
TBA700-11	FBI 1112	SBI 2112	FSB 3112
TBA700-15	FBI 1112	SBI 2122	FSB 3112
TBA700-18.5	FBI 1112	SBI 2112	FSB 3212
TBA700-22	FBI 1014	SBI 2014	FSB 3014
TBA700-30	FBI 1014	SBI 2014	FSB 3014
TBA900-3	FBI 1008	SBI 2008	FSB 3008
TBA900-4	FBI 1008	SBI 2008	FSB 3008
TBA900-5.5	FBI 1008	SBI 2008	FSB 3008
TBA900-7.5	FBI 1008	SBI 2008-1	FSB 3008-1
TBA900-11	FBI 1008	SBI 2008-1	FSB 3008-1
TBA900-15	FBI 1010	SBI 2010-1	FSB 3010-1
TBA900-18.5	FBI 1010	SBI 2010-1	FSB 3010-1
TBA900-22	FBI 1112	SBI 2112-1	FSB 3112-1
TBA900-30	FBI 1112	SBI 2212-1	FSB 3212-1
TBA1100-4	FBI 1008	SBI 2008	FSB 3008
TBA1100-5.5	FBI 1008	SBI 2008	FSB 3008
TBA1100-7.5	FBI 1008	SBI 2008-1	FSB 3008-1
TBA1100-11	FBI 1008	SBI 2008-1	FSB 3008-1
TBA1100-15	FBI 1008	SBI 2008-1	FSB 3008-1
TBA1100-18.5	FBI 1010	SBI 2010-1	FSB 3010-1
TBA1100-22	FBI 1010	SBI 2010-1	FSB 3010-1
TBA1100-30	FBI 1112	SBI 2212-1	FSB 3212-1
TBA1100-37	FBI 1112	SBI 2212-1	FSB 3212-1
TBA1100-45	FBI 1112	SBI 2212-1	FSB 3212-1

Note: Silencer or Filter/Silencer assemblies with a '-1' suffix have an extended support leg; specify on order.

ORDERING INFORMATION

To ensure prompt and accurate processing of your order, the following information is required:

1. **Model Number** – From Capacity Table TBA50-2
2. **Discharge Position** – From Dimensional Drawing (Discharge Position Number 1 Supplied If Not Specified).
3. **Electrical Specifications** – Voltage and Phase
4. **Motor Type – 50Hz** (Factory Installed, ODP or TEFC): 50Hz (Factory Installed, Customer Supplied):
Furnished Less Motor.
5. **Accessories Required:** See TBA50-4
6. **Special Altitude Or Inlet Air Temperature Conditions** (See TBA50-7)



CORRECTION FACTOR TABLE

Air Temp. Deg. C.	Altitude In Meters Above Sea Level															
	0	200	400	600	800	1000	1200	1400	1600	1800	2000	2200	2400	2600	2800	3000
-50	.76	.78	.80	.82	.84	.86	.88	.90	.92	.95	.97	.99	1.02	1.04	1.07	1.10
-40	.80	.81	.83	.86	.88	.90	.92	.94	.96	.99	1.01	1.04	1.06	1.09	1.12	1.15
-30	.83	.85	.87	.89	.91	.94	.96	.98	1.01	1.03	1.06	1.08	1.11	1.14	1.17	1.20
-20	.86	.88	.91	.93	.95	.97	1.00	1.02	1.05	1.07	1.10	1.13	1.15	1.19	1.22	1.25
-10	.90	.92	.94	.97	.99	1.01	1.04	1.06	1.09	1.11	1.14	1.17	1.20	1.23	1.26	1.30
0	.93	.95	.98	1.00	1.03	1.05	1.08	1.10	1.13	1.16	1.19	1.22	1.25	1.28	1.31	1.35
10	.97	.99	1.01	1.04	1.06	1.09	1.12	1.14	1.17	1.20	1.23	1.26	1.29	1.33	1.36	1.40
20	1.00	1.02	1.05	1.08	1.10	1.13	1.16	1.18	1.21	1.24	1.27	1.31	1.34	1.37	1.41	1.45
30	1.03	1.06	1.09	1.11	1.14	1.17	1.19	1.22	1.25	1.28	1.32	1.35	1.38	1.42	1.46	1.49
40	1.07	1.09	1.12	1.15	1.18	1.21	1.23	1.26	1.29	1.33	1.36	1.39	1.43	1.47	1.50	1.54
50	1.10	1.13	1.16	1.19	1.21	1.24	1.27	1.30	1.34	1.37	1.40	1.44	1.47	1.51	1.55	1.59
60	1.14	1.16	1.19	1.22	1.25	1.28	1.31	1.35	1.38	1.41	1.45	1.48	1.52	1.56	1.60	1.64
70	1.17	1.20	1.23	1.26	1.29	1.32	1.35	1.39	1.42	1.45	1.49	1.53	1.56	1.61	1.65	1.69
80	1.20	1.23	1.26	1.30	1.33	1.36	1.39	1.43	1.46	1.50	1.53	1.57	1.61	1.65	1.70	1.74
90	1.24	1.27	1.30	1.33	1.36	1.40	1.43	1.47	1.50	1.54	1.58	1.62	1.66	1.70	1.75	1.79

The above composite table shows density correction factors for temperatures and altitude. Performance ratings shown in this bulletin have been calculated for standard air density of 1.205 kg/m³ (20°C @ 760 mm Hg Barometric Pressure). When density is other than standard, corrections for pressure and kilowatts must be made.

Example: Requirement – a blower to deliver 5080 m³/hr at 700 mm pressure at 40°C and 1400 m altitude.

1. Density correction table indicates a factor of 1.26 for 40°C and 1400 m altitude.

2. 700 mm X 1.26 = 882 mm.

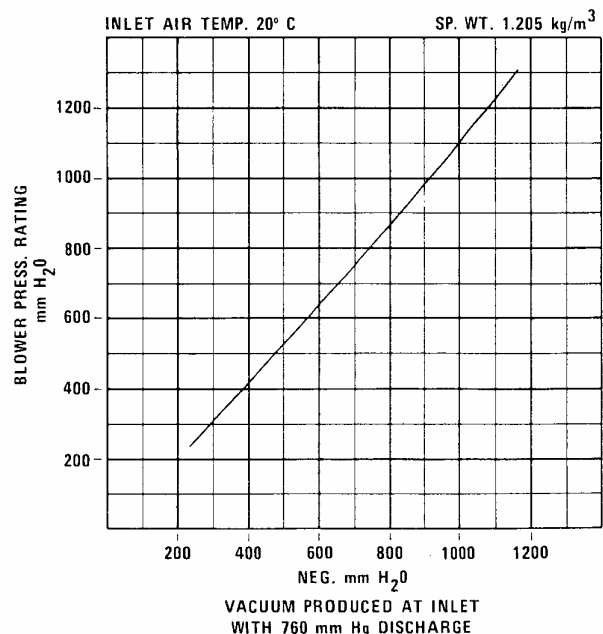
3. From the capacity table on sheet TBA50-2, select model TBA 900-18.5 (TEFC) showing a capacity of 5080 m³/hr @ 900 mm requiring an 18.5 kW motor on standard air.

4. Divide pressure and kW shown by 1.26 for performance at elevated temperature and altitude. Correct selection will deliver 5080 m³/hr at 714 mm at 40°C and 1400 m altitude with a 15 kW motor. Select a TBA 900-18.5 with a 15 kW motor unless unit must start up cold, in which case, use of an 18.5 kW motor is required.

PRESSURE CONVERSION TABLE

in. wc	osi	mm wc	kPa
3.94	2.27	100	.98
7.87	4.55	200	1.96
11.81	6.82	300	2.94
15.75	9.09	400	3.92
19.69	11.37	500	4.90
23.62	13.64	600	5.88
27.56	15.91	700	6.86
31.50	18.18	800	7.84
35.43	20.46	900	8.82
39.37	22.73	1000	9.80
43.31	25.00	1100	10.78
47.24	27.28	1200	11.76
51.18	29.55	1300	12.75
55.12	31.82	1400	13.73
59.06	34.10	1500	14.71
62.99	36.37	1600	15.69
66.93	38.64	1700	16.67
70.87	40.91	1800	17.65

TURBO BLOWER PERFORMANCE VACUUM RATING AT ATMOSPHERIC DISCHARGE



In accordance with Hauck's commitment to Total Quality Improvement, Hauck reserves the right to change the specifications of products without prior notice.

This page left intentionally blank.